

# 1422 SHDSL ROUTER



> THE TELINDUS 1422 SHDSL ROUTER IS A PROFESSIONAL STATE-OF-THE-ART ROUTER WITH BUILT-IN SHDSL LINE INTERFACE OFFERING SYMMETRIC FULL-DUPLEX TRANSMISSION UP TO 2.3 MBPS OVER A SINGLE TWO-WIRE (4.6 MBPS ON 2 PAIR) UNCONDITIONED UNSHIELDED TWISTED-PAIR CABLE.

The unit features one DSL interface and one 10/100 Base-T Ethernet Interface.

The Telindus 1422 SHDSL Router can be used as CPE in combination with any Telindus or third-party DSLAM (Digital Subscriber Line Access Multiplexer) or in a point-to-point set-up. The Telindus 1422 SHDSL Router is the ideal access device for connecting business users, offering managed IP services at the highest possible speeds.

The line speed can be automatically adapted to optimise the throughput as a function of the characteristics of the local loop. To achieve even higher speeds (up to 4.6Mbps) or a longer reach, a 2-line pair version is also available.

Fully supported by the TDRE (Telindus Dynamic Routing Engine), the unit supports advanced features such as IP Quality of Service, IP Virtual Private Networks and support for VLANs. With a routing performance of approximately 40.000 pps, the 1422 SHDSL Router is capable to handle any type of multimedia or delay-sensitive traffic.

The equipment supports different management interfaces on different levels of the network. At the local level it is possible to manage the equipment over a management console interface by means of a PC maintenance tool, a command line interface or a menu driven interface.

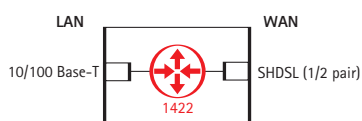
On IP level the equipment supports Telnet, SNMP, HTTP or TFTP/FTP. In this way it is possible to integrate the unit in any existing network management environment.

At the network level it is possible to manage the access network with a stand-alone element manager or with an element manager integrated into HP OpenView.

## FEATURES & BENEFITS

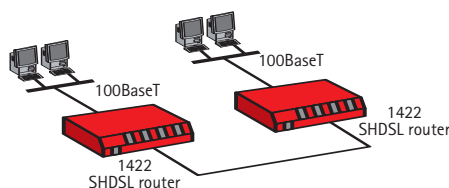
- > FEATURE-RICH ROUTER WITH BUILT-IN SHDSL LINE INTERFACE
- > FOR USE IN POINT-TO-POINT CONFIGURATIONS OR IN COMBINATION WITH A DSLAM
- > STANDARD ATM LINE ENCAPSULATION PROTOCOL
- > SUPPORT FOR ADVANCED SERVICES BASED ON VPN AND VLANS
- > ADVANCED QOS MECHANISMS FOR SUPPORTING VOIP TRAFFIC
- > STANDARD 10/100 AUTO-SENSE ETHERNET INTERFACE
- > ALSO AVAILABLE WITH 2 LINE PAIRS FOR LONGER REACH OR HIGHER SPEED (UP TO 4.6MBPS)
- > FULLY MANAGEABLE WITH A VARIETY OF TOOLS

V 1422 SHDSL ROUTER MODEL

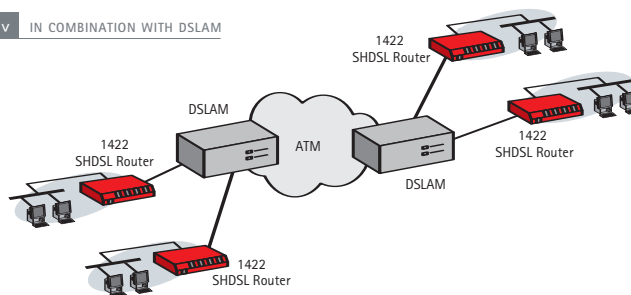


The Telindus 1422 SHDSL Router supports auto-install features over the WAN network. This makes it ideally suited for plug-and-play installation at customer premises while the configuration is prepared at a central site.

V POINT-TO-POINT CONNECTION



V IN COMBINATION WITH DSLAM



LINE INTERFACE

- > Applicable standards: ITU-T G.991.2, G.994
- > Single pair or two pair line access
- > Connector: RJ12
- > Impedance: 135 ohm
- > Coding: TC PAM, compliant ITU-T G.991.2 Annex A&B (G.SHDSL), ETSI TS 101524
- > Line speeds:
  - > Single pair: N x 64 kbps (N = 1 ... 36)
  - > Two pair: N x 128 kbps (N = 1 ... 36)
- > Handshaking: compliant G.994.1 (automatic speed negotiation) or fixed speed
- > Handshaking: compliant G.994.1 (automatic speed negotiation) or fixed speed
- > Performance monitoring: compliant G.826 (errored seconds, severely errored seconds, unavailability seconds)

IDEAL MAXIMUM DISTANCE (NOISE-FREE) ON A SINGLE PAIR

1p line speed (kbps)	2p line speed (kbps)	0.4mm 26AWG (km)	0.5mm 24AWG (km)	0.6mm (km)	0.8mm 20AWG (km)	1.0mm 18AWG (km)	1.2mm (km)
64	128	11.0	15.1	21.5	27.2	38.2	42.4
128	256	8.0	11.0	15.6	19.8	27.8	30.8
256	512	8.2	11.3	16.0	20.3	28.5	31.6
512	1024	7.2	9.9	14.0	17.8	25.0	27.7
1024	2048	5.5	7.6	10.7	13.6	19.1	21.2
1536	3072	4.0	5.5	7.8	9.9	13.9	15.4
2048	4096	4.2	5.8	8.2	10.4	14.6	16.2
2304	4608	4.0	5.5	7.8	9.9	13.9	15.4

LAN INTERFACE

- > Compliant with IEEE 802.3 10Mbps HDX/FDX Ethernet
- > Compliant with IEEE 802.3u 100Mbps HDX Ethernet
- > 10/100Mbps auto-sense
- > RJ45 Unshielded Twisted Pair (UTP)

CONTROL INTERFACE

- > Applicable standards: ITU-T V.24, V.28, EIA/TIA 574
- > DCE signals: RXD, TXD, SGND
- > Connector: female DB9

SUPPORTED DSL ENCAPSULATION PROTOCOLS

- > ATM

IP ROUTING

- > Conform TDRE (Telindus Dynamic Routing Engine), limited to ATM

ROUTING AND BRIDGING PERFORMANCE

- > Routing performance: 40.000 pps
- > Bridging performance: 30.000 pps
- > Supported number of ATM PVCs: 31
- > Supported number of VPN tunnels: 10
- > Supported number of VLANs: 200
- > Supported number of bridge-groups: 13

MEMORY

- > 8 MByte DRAM
- > 8 MByte Flash

MAINTENANCE AND MANAGEMENT SUPPORT

- > Conform TDRE (Telindus Dynamic Routing Engine)

FRONT PANEL INDICATORS

- > PWR: Power
- > LINE / LNK1: first line pair status
- > LINE / LNK2: second line pair status (on 2 pair versions only)
- > LINE / ACT: DSL encapsulation protocol status
- > LAN / ACT: LAN status

MECHANICAL DATA (H X W X D)

- > 45 x 220 x 235 mm Weight: 700 g

POWER REQUIREMENTS

- > 7.5Vdc, 0.75A (1 pair models), 9 Vdc, 1A (2 pair models)
- > External power adapters available for 24/48Vdc, 115Vac and 230 Vac

SALES CODES

- > 186682 1422 SHDSL 230VAC
- > 187874 1422 SHDSL-2P 230VAC (2 pair)

Units without external power module and separate power adapters can be found in the sales codes quick reference