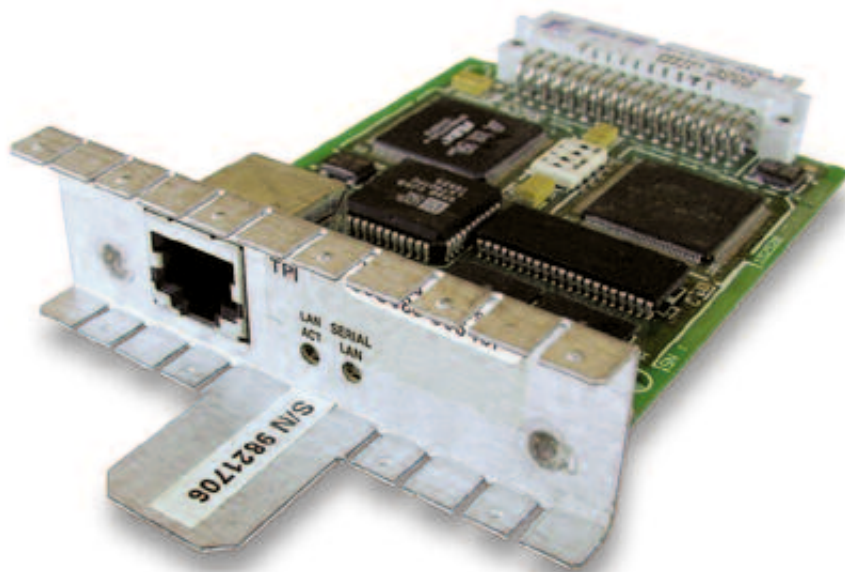


CROCUS 10M ROUTER INTERFACE



> THE CROCUS ROUTER 10M INTERFACE CAN ADD PROFESSIONAL INTEGRATED ROUTING AND BRIDGING FUNCTIONALITY TO A WIDE RANGE CROCUS PRODUCTS, INCLUDING SHDSL, FIBRE-OPTIC AND MULTIPLEXING EQUIPMENT.

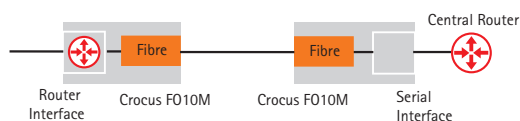
Therefore, by effectively embedding routing and bridging in the transmission or interface conversion unit, the solution can drastically reduce the global investment and operational costs.

The Crocus 10M Router interface is fully supported by the TDRE (Telindus Dynamic Routing Engine) and includes the possibility for encapsulation into Frame-Relay, ATM or PPP.

The unit comes with a direct Ethernet auto-sense 10/100 Base-T connection and supports differentiated services based on VPNs (Virtual Private Networks). For this reason, it integrates features like L2TP (Layer 2 Tunnelling Protocol), 802.1Q (VLAN tagging) and QoS (Quality Of Service) based on DiffServ.

The unit is designed for integration into demanding network environments and can be controlled by the complete set of network maintenance and management tools as they are described in this catalogue. The Crocus 10M Router interface supports auto install features over the WAN network. This makes it ideally suited for plug-and-play installation at customer premises while the configuration is prepared at a central site.

REMOTE NETWORK EXTENSION USING FIBRE-OPTIC MEDIA



FEATURES & BENEFITS

- > LAN INTERFACE FOR THE CROCUS PRODUCT FAMILY
- > LAN INTERCONNECT WITH SPEEDS UP TO 10 MBPS
- > 10/100 AUTO-SENSE ETHERNET INTERFACE
- > IP ROUTING AND BRIDGING
- > CLASS OF SERVICE ROUTING
- > VLAN INTERCONNECT
- > ATM, FRAME RELAY AND PPP WAN ENCAPSULATION
- > BUILT-IN L2TP SECURITY
- > FULLY MANAGEABLE WITH A VARIETY OF TOOLS

LAN INTERFACE

- > Compliant with IEEE 802.3 10Mbps Ethernet
- > Compliant with IEEE 802.3u 100Mbps Ethernet
- > 10/100Mbps auto-sense
- > RJ45 Unshielded Twisted Pair (UTP)

FRONT PANEL INDICATIONS

- > LAN / ACT: LAN status
- > SERIAL / ACT: WAN layer 2 status

SUPPORTED WAN ENCAPSULATION PROTOCOLS

- > ATM
- > Frame-Relay
- > PPP

IP ROUTING AND BRIDGING

- > Conform TDRE (Telindus Dynamic Routing Engine)

ROUTING AND BRIDGING PERFORMANCE

- > Routing performance: 45.000 pps
- > Bridging performance: 36.000 pps
- > Minimum supported number of Frame-Relay DLCIs: 40
- > Supported number of VPN tunnels: 10
- > Supported number of VLANs: 256
- > Supported number of bridge-groups: 13

MAINTENANCE AND MANAGEMENT SUPPORT

- > Conform TDRE (Telindus Dynamic Routing Engine)

MEMORY

- > Flash memory: 8 Mbyte
- > RAM: 8 Mbyte

MECHANICAL DATA (H X W X D)

- > 25 x 88 x 105 mm Weight: 100 g

SALES CODES

- > 177455 Router Intf.10M Crocus

MORE INFO:

TELINDUS
Geldenaaksebaan 335
B-3001 Heverlee
Belgium

TEL +32 16 38 20 11
FAX +32 16 40 01 02
E-MAIL productinfo@telindus.com
www.telindusproducts.com

TELINDUS

broadband solutions