

# CROCUS FO10M



## FEATURES & BENEFITS

- > MODEM FOR FIBRE OPTIC CONNECTIVITY UP TO 10MBPS
- > WIDE RANGE OF EXCHANGEABLE FIBRE OPTIC MODULES FOR MULTI-MODE AND SINGLE-MODE FIBRE
- > MULTIPLE EXCHANGEABLE DATA INTERFACES FOR CONNECTIVITY TO ANY TYPE OF APPLICATION
- > FULLY MANAGEABLE BY FREE MAINTENANCE SOFTWARE (TMA®)
- > INTEGRATION WITH HP OPENVIEW® MANAGEMENT PLATFORM
- > OPTIONAL REDUNDANCY ON THE OPTICAL LINK

### AVAILABLE OPTIC MODULES

Direct SC/PC or ST/PC connectors\*  
Multimode or single mode modules  
Dual fibre or single fibre modules  
Up to 70 km

\*Note: SC/PC to FC/PC and FC/APC adapter cables (male/male) are also available

### USER SPEEDS

- > Internal clocking: Nx64 kbps (up to 2 Mbps)  
Nx2 Mbps (up to 10 Mbps)
- > Slave/Receive clocking: Nx64 kbps (up to 2 Mbps)  
Nx2 Mbps (up to 10 Mbps)
- > External clocking: Nx32 kbps (up to 10 Mbps)

### AVAILABLE APPLICATION INTERFACES

- > V.35: up to 10 Mbps
- > V.36/RS-449: up to 10 Mbps
- > X.21: up to 10 Mbps
- > RS-530/RS-530A: up to 10 Mbps
- > V.24/RS-232: up to 128 kbps
- > G.703 E1: 2 Mbps (E1 or FE1) fixed
- > Quad G.703 E1: 4 x 2 Mbps (E1) fixed
- > Ethernet IP Router 2M: up to 2 Mbps
- > Ethernet IP Router 10M: up to 10 Mbps

### FRONT PANEL

- > Testloops
- AL: Analogue Loop
- RDL: Remote Digital Loop
- DL: Local Digital Loop
- ET: Error Test generator (test pattern 215-1)
- > Indications
- PWR: Power
- TST: Test indicator (circuit 142)
- ERR: Bit Error Indicator (Error test) - AIS for G.703
- DCD A: Data Carrier Detect for fibre module A (circuit 109)

## > THE CROCUS FO10M IS A HIGH-SPEED MODEM DESIGNED FOR CONNECTING END-USER EQUIPMENT USING OPTICAL FIBRE.

Thanks to the field exchangeable fibre modules, the Crocus FO10M can be used for almost any type of fibre medium, ranging from short haul multimode fibre, to the long haul singlemode fibre connection. When using a long haul module, distances of over 70 km can easily be covered.

The Crocus FO10M allows the user to connect at speeds up to 10 Mbps, and can be terminated on almost any type of data interface. Not only traditional serial interfaces like V.35, V.36, RS-530 and X.21, but also G.703 (transparent 2 Mbps or with G.704 framing) and direct Ethernet 10/100Base-T connections with integrated bridge or router functionality are available. It is possible to combine different types of interfaces on the two sides of the communication link, so eliminating the need for external interface conversion. All these interface boards can be exchanged in only a few seconds, so flexibility is maximised. The actual speed of the connection can be locally or centrally configured in multiples of 64 kbps (up to 2Mbps), or in multiples of 2 Mbps (up to 10 Mbps). This makes the equipment also very suited for offering multiple user speeds in carrier access environments.

For critical connections, it is possible to create 100% redundancy on the optical link, by inserting a second optical interface into the Crocus FO10M. This creates a complete 1-to-1 backup of the physical connection.

For large concentration sites, rackmount versions are mounted in a CN4 cardnest and can offer densities of up to 30 modems per nest. Both 230/115 Vac and direct 24/48 Vdc powering can be used.

The unit is designed for integration into demanding network environments and can be controlled by the complete set of network maintenance and management tools as they are described in this catalogue.

DCD B: Data Carrier Detect for fibre module B (circuit 109)  
TXD: Transmit data (circuit 103)  
RXD: Receive data (circuit 104)

### SUPPLEMENTARY FEATURES

- > The modem has a flash memory to allow firmware upgrades
- > Maintenance of local and remote modem with free Windows® software
- > Integrated network management module for HP OpenView®
- > Optional Second optic module for redundancy

### MECHANICAL DATA (H X W X D)

- > Desktop versions: 50 x 200 x 350 mm weight: 1.4 kg
- > Rack-mount versions: 235 x 20 x 300 mm weight: 1 kg

### POWER REQUIREMENTS

- > Desktop versions 230Vac +/-10% 50-60 Hz: 60 mA  
115Vac +/-10% 50-60Hz: 120 mA  
24/48Vdc (18Vdc - 72Vdc): 160 mA
- > Rack-mount version 48Vdc (36Vdc - 72Vdc): 180 mA

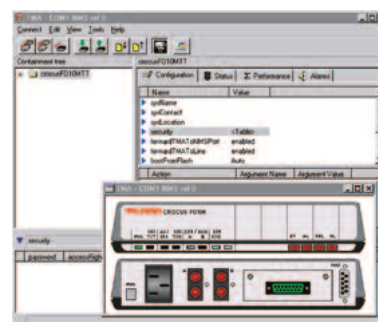
SALES CODES: BASIC UNITS  
(REQUIRES ADDITIONAL MODULAR DATA AND FIBRE INTERFACE)

- > 175659 Crocus FO10M TT BU 230V
- > 159645 Crocus FO10M TT BU 24/48V
- > 175658 Crocus FO10M TWIN-CV BU

SALES CODES: INTERFACES

- > 154404 G703 intf. Crocus SDSL-FO
  - > 163369 4E1 Intf. Crocus
- All other transparent data interface and fibre modules are found in the sales codes quick reference section

### TMA INTERFACE



CLASS 1 LASER PRODUCT LASER RADIATION:  
AVOID EXPOSURE TO THE BEAM  
To avoid possible eye damage, do not view into an uncovered optical module when the equipment is operational.

MORE INFO:  
TELINDUS  
Geldenaaksebaan 335  
B-3001 Heverlee  
Belgium

TEL +32 16 38 20 11  
FAX +32 16 40 01 02  
E-MAIL [productinfo@telindus.com](mailto:productinfo@telindus.com)  
[www.telindusproducts.com](http://www.telindusproducts.com)

**TELINDUS®**

broadband solutions