

# TELINDUS 1021 ROUTER



> THE TELINDUS 1021 ROUTER IS A LAN TO LAN ROUTER WITH BUILT-IN 4-PORT ETHERNET SWITCH AND AN OPTIONAL ISDN BACKUP FACILITY.

Fully supported by the TDRE (Telindus Dynamic Routing Engine), the unit can add additional functionality to a user's network, such as IP Quality of Service, IP Virtual Private Networks (VPN) and support for VLANs. With a routing performance of approximately 45.000 pps, the 1021 Router is capable to handle any type of multimedia or delay-sensitive traffic. This makes the Telindus 1021 Router the ideal access device for connecting business users, offering secured managed IP services at the highest possible speeds.

The basic model comes with 1+4 Ethernet ports enabling LAN to LAN routing and bridging. A model with

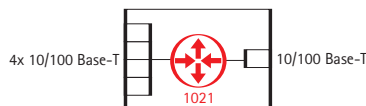
additional 2 BRI (Basic Rate ISDN) interfaces offers backup functionality with the possibility to aggregate the speeds of the different B channels up to 256 kbps. All models support a hardware accelerator for DES and 3DES encryption.

The equipment supports different management interfaces on different levels of the network.

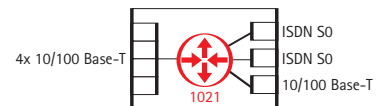
**FEATURES & BENEFITS**

- > PROFESSIONAL LAN TO LAN ROUTER
- > STANDARD INTEGRATED 4-PORT ETHERNET VLAN SWITCH
- > OPTIONAL ISDN BACKUP FACILITY
- > IP ROUTING AND BRIDGING
- > CLASS OF SERVICE ROUTING
- > VLAN INTERCONNECT
- > VPN TERMINATION BASED ON L2TP AND IPSEC
- > FULLY MANAGEABLE WITH A VARIETY OF TOOLS

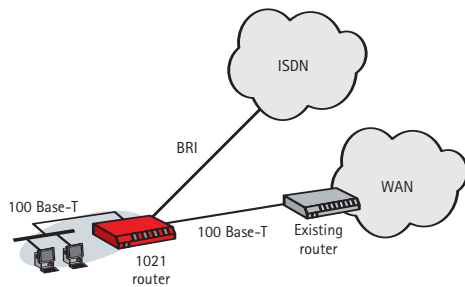
V 1021 2ETH-4P HWA ROUTER MODEL



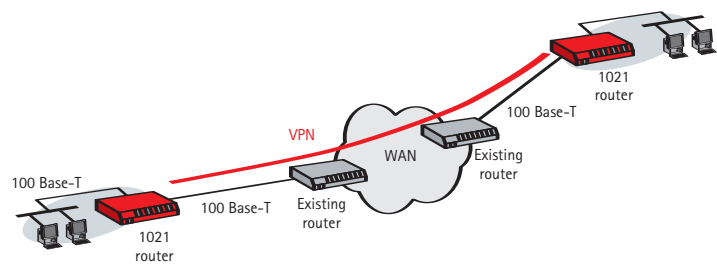
V 1021 2ETH-4P ISDN-BRI HWA ROUTER MODEL



V ADDING ISDN BACKUP POSSIBILITIES IN AN EXISTING NETWORK



V ADDING VPN CONNECTIONS IN AN EXISTING NETWORK



At the local level it is possible to manage the equipment over a management console interface by means of a PC maintenance tool (TMA), a command line interface or a menu driven interface.

On IP level the equipment supports Telnet, SNMP, HTTP or TFTP/FTP. In this way it is possible to integrate the unit in any existing network management environment.

At the network level it is possible to manage the access network with a stand-alone element manager or with an element manager integrated into HP OpenView.

available on Q2 2005

**LAN INTERFACES**

- > Compliant with IEEE 802.3 10Mbps HDX/FDX Ethernet
- > Compliant with IEEE 802.3u 100Mbps HDX/FDX Ethernet
- > 10/100Mbps auto-sense
- > Auto cross-over
- > RJ45 Unshielded Twisted Pair (UTP)
- > Number of interfaces: 1+4

**INTEGRATED VLAN SWITCH**

- > Number of ports: 4
- > VLAN tagging per port
- > Tagged, untagged or trunking VLAN operation
- > Maximum total number of VLANs: 16

**BRI INTERFACES (ON SELECTED MODELS ONLY)**

- > PPP WAN encapsulation
- > Connector: RJ45 S0 DTE
- > Applicable standards: I.420, I.412, I.430, I.440 (= Q.920), I.441 (= Q.921), I.450 (= Q.930), I.451 (= Q.931)
- > Number of interfaces: 2

**CONTROL INTERFACE**

- > Applicable standards: ITU-T V.24, V.28, EIA/TIA 574
- > DCE signals: RXD, TXD, SGND
- > Connector: female DB9

**IP ROUTING**

- > Conform TDRE (Telindus Dynamic Routing Engine)
- > Standard on-board encryption hardware accelerator

**ROUTING AND BRIDGING PERFORMANCE**

- > Routing performance: 45.000 pps
- > Bridging performance: 36.000 pps
- > Supported number of ATM PVCs: 31
- > Supported number of VPN tunnels: 10
- > Supported number of VLANs: 200
- > Supported number of bridge-groups: 13

**MEMORY**

- > 16 MByte DRAM
- > 8 MByte Flash

**MAINTENANCE AND MANAGEMENT SUPPORT**

- > Conform TDRE (Telindus Dynamic Routing Engine)

**FRONT PANEL INDICATORS**

- > PWR: Power
- > LINE / BACKUP: ISDN backup status (on ISDN models only)
- > LINE / ACT: ISDN encapsulation protocol status (on ISDN models only)
- > LAN1 / 1..4: LAN status on Ethernet switch
- > LAN2: LAN status on second Ethernet port

**MECHANICAL DATA (H X W X D)**

- > 45 x 220 x 135 mm Weight: 500 g

**POWER REQUIREMENTS**

- > 9 Vdc, 1A
- > External power adapters available for 24/48Vdc, 115Vac and 230 Vac

**SALES CODES: STANDARD UNITS**

- > 195226 Telindus 1021 2Eth-4P HWA 230VAC
- > 195231 Telindus 1021 2Eth-4P ISDN-BRI HWA 230VAC (with ISDN)

Units without power module and separate power adapters can be found in the sales codes quick reference section